

# AMATEUR Photography SHOW

PAEX Summer Fair Aug 1-5, 2023

Prizes

- 1st- \$100
- 2nd \$50
- 3rd \$25

**3 Age Categories:**

- Youth – 12 yr and under**
- Teens - 13 – 17 yr**
- Adults – 18 and over**

Print  
Size  
4X6

Free to enter; 1 entry per Class

**Entries now being accepted.**

**Entries can be delivered to the PAEX office  
between 8 am and 4:30pm Monday - Friday.**

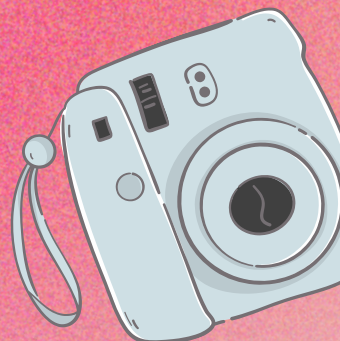
Contact the PAEX for more details

**Classes:**

- People
- Animals
- Outdoor  
scenery
- Other

**815 Exhibition Drive,  
Prince Albert, SK S6V 5T1  
306-941-8916**

Entries accepted no later  
than 4:30 pm July 17th, 2023





**AMATEUR**  
*Photography*  
**SHOW GUIDELINES**

Age categories:

Youth – 12 yr and under

Teens - 13 – 17 yr

Adults – 18 and over

- Amateur photographers only.
- Photographs to be taken by the Exhibitor.
- Photographs displayed during the PA Exhibition, Aug. 1 – 5, 2023
- Photos to be mounted on white coroplast board.
- Coroplast boards are available at no charge from the PAEX office.
- Exhibitors may enter in more than one class.
- One entry per class.
- Place four, 4” x 6” photographs per board.
- Coroplast Board dimensions are 24” x 16”.
- Exhibitor to arrange photographs at their discretion on coroplast.
- No title, words or other decorations on the photographs or board.
- Tape to be used to secure photographs on the board.
- No tape to be showing.
- Entries are accepted now, until 4:30pm July 17th, 2023.
- Entries to be delivered to the PAEX admin office.
- Judging will take place in each category with prizes awarded.
- Photographs to be picked up at the PAEX office after August 6/23.
- PAEX reserves the right to limit entries if required.

**1 Entry per Class**

**Classes:**

- People
- Animals
- Outdoor scenery
- Other

**Prizes by Category & Class**

1st - \$100

2nd- \$50

3rd - \$25

Photos will be judged based on the above guidelines as well as photograph clarity, originality and presentation.

PAEX office hours are 8am to 4:30 pm Mon- Fri  
815 Exhibition Drive, Prince Albert, SK S6V5T1  
306-941-8916 or paex@sasktel.net